

In March 2013, Lowest FIP Caseload Ever

Welfare Caseloads Do Not Track With Economy

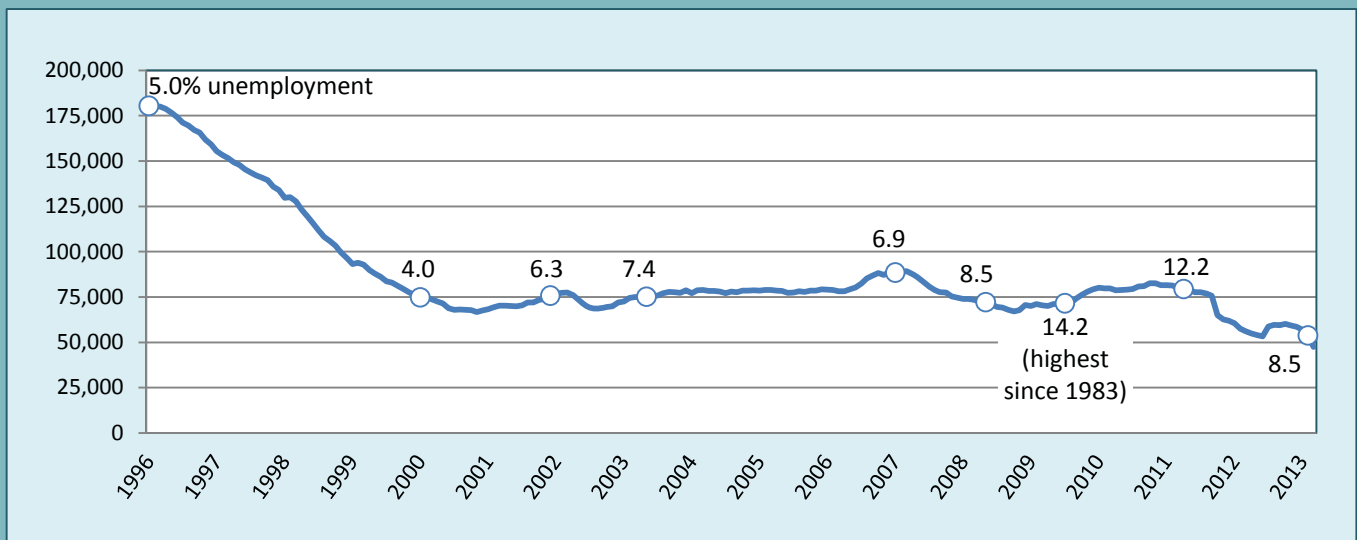
In March 2013, there were 47,460 households in Michigan who received welfare payments. This is the first time since the Family Independence Program was implemented in 1996 that the caseload dropped below 50,000. This also represents a 21% drop (more than 12,600) from just five months before, in October 2012.

During the same month, Michigan's unemployment rate dropped to 8.5%. The record plunge in caseloads is not likely due to the gradual improvement in the economy, however. Last time Michigan had an unemployment rate as low as 8.5%, in August 2008, the FIP caseload was more than 69,000. Exactly one year later, in August 2009, Michigan's unemployment rate was 14.2% (the


highest since 1983), yet the caseload only increased by 2,555 households during that time.

As the chart shows, there is little correlation between changes in the caseload and changes in the unemployment rate. Drops in the caseload are likely more influenced by policy decisions that make access to temporary cash assistance more difficult. During 2007-2008, the caseload drop during increasing unemployment was due in much part to new time limits, a new documentation requirement that was difficult for poor families to meet, and increasingly burdensome application requirements. The current plunge is likely due to further restrictions on time limits and the decision by the administration to count six months of Extended FIP (\$10 per month after a household leaves the program) against the time limits.

**Cash Assistance Cases in Michigan Since 1996 Welfare Reform
(with Unemployment Rates in Selected Years*)**




*Note: Unemployment rates are seasonally adjusted.
Source: Michigan Office of Labor Market Information
Prepared by Michigan League for Public Policy

 Prepared by: Michigan League for Public Policy	Unemployment (data not seasonally adjusted)						Food Assistance Program				
	Unemployment Rate			Number Unemployed			Average Number of Households Per Month			Percent of Population Receiving Assistance ¹	
	County	Qtr 1 2012	Qtr 1 2013	+/- points	Qtr 1 2012	Qtr 1 2013	% change	Qtr 1 2012	Qtr 1 2013	% change	Qtr 1 2012
Michigan²	9.8	9.2	-0.6	453,333	427,000	-5.8	926,284	909,574	-1.8	18.6%	18.0%
Alcona	14.5	16.4	1.9	527	607	15.2	827	901	9.0	14.8%	16.4%
Alger	13.3	11.8	-1.6	497	434	-12.7	591	607	2.7	12.2%	12.0%
Allegan	8.5	7.3	-1.2	4,487	3,857	-14.0	6,858	6,739	-1.7	13.7%	13.4%
Alpena	11.0	10.4	-0.6	1,484	1,379	-7.1	3,281	3,155	-3.8	20.9%	20.0%
Antrim	12.7	11.8	-0.9	1,263	1,154	-8.6	1,690	1,646	-2.6	15.4%	15.1%
Arenac	14.8	14.4	-0.4	1,001	942	-5.9	1,748	1,746	-0.1	22.7%	21.9%
Baraga	19.1	18.2	-0.9	722	674	-6.7	704	729	3.5	16.1%	15.9%
Barry	7.0	6.2	-0.8	2,018	1,805	-10.6	3,588	3,575	-0.4	13.2%	13.0%
Bay	9.7	9.3	-0.4	4,997	4,749	-5.0	10,066	9,856	-2.1	18.3%	17.7%
Benzie	13.7	11.9	-1.8	1,117	970	-13.2	1,274	1,208	-5.1	15.4%	14.4%
Berrien	10.2	9.4	-0.8	7,256	6,559	-9.6	15,698	15,378	-2.0	20.2%	19.6%
Branch	9.4	8.7	-0.7	1,818	1,629	-10.4	3,782	3,544	-6.3	18.6%	17.5%
Calhoun	8.1	7.2	-0.9	5,119	4,530	-11.5	16,314	15,561	-4.6	23.2%	22.1%
Cass	8.5	8.1	-0.4	2,127	2,037	-4.2	4,361	4,188	-4.0	18.1%	17.1%
Charlevoix	13.6	12.6	-0.9	1,678	1,542	-8.1	1,682	1,628	-3.2	13.9%	13.3%
Cheboygan	17.0	17.2	0.2	1,673	1,622	-3.1	2,535	2,466	-2.7	20.3%	19.2%
Chippewa	12.5	12.0	-0.6	2,041	1,925	-5.7	2,798	2,792	-0.2	14.7%	14.4%
Clare	13.4	12.8	-0.6	1,623	1,519	-6.4	4,155	4,044	-2.7	27.1%	25.9%
Clinton	6.7	6.4	-0.3	2,519	2,399	-4.7	2,989	2,844	-4.8	8.3%	7.8%
Crawford	12.0	10.9	-1.1	690	623	-9.7	1,436	1,461	1.8	20.4%	20.3%
Delta	10.7	10.6	-0.1	1,960	1,911	-2.5	3,249	3,227	-0.7	16.7%	16.6%
Dickinson	8.7	8.2	-0.5	1,157	1,077	-6.9	1,892	1,879	-0.7	14.1%	13.7%
Eaton	7.1	6.7	-0.4	3,906	3,664	-6.2	6,544	6,359	-2.8	12.5%	12.1%
Emmet	15.2	14.3	-0.8	2,716	2,514	-7.4	2,286	2,152	-5.9	14.2%	12.9%
Genesee	10.2	9.6	-0.6	18,804	17,619	-6.3	54,988	53,719	-2.3	25.7%	24.8%
Gladwin	14.8	13.8	-0.9	1,403	1,273	-9.2	2,585	2,631	1.8	19.8%	19.7%
Gogebic	11.1	9.9	-1.2	783	686	-12.3	1,715	1,649	-3.8	19.3%	18.4%
Gr. Traverse	9.9	8.8	-1.0	4,431	3,970	-10.4	6,191	5,929	-4.2	13.3%	12.7%
Gratiot	10.5	9.8	-0.7	1,953	1,810	-7.3	3,373	3,421	1.4	17.3%	17.2%
Hillsdale	10.2	9.7	-0.6	1,951	1,826	-6.4	3,734	3,738	0.1	17.8%	17.4%
Houghton	9.8	9.0	-0.8	1,656	1,476	-10.8	2,607	2,426	-7.0	13.8%	12.8%
Huron	10.2	9.8	-0.4	1,572	1,495	-4.9	2,331	2,223	-4.6	14.5%	13.4%
Ingham	8.1	7.6	-0.5	11,544	10,757	-6.8	27,912	27,502	-1.5	18.7%	18.4%
Ionia	9.7	8.3	-1.5	2,856	2,410	-15.6	4,932	4,888	-0.9	16.4%	16.1%
Iosco	14.1	13.4	-0.8	1,357	1,269	-6.5	3,265	3,201	-2.0	25.0%	23.9%
Iron	10.5	10.4	0.0	558	550	-1.5	990	1,018	2.8	16.4%	17.2%
Isabella	7.1	6.5	-0.6	2,568	2,347	-8.6	5,437	5,062	-6.9	14.3%	13.4%
Jackson	9.3	8.6	-0.7	6,549	6,049	-7.6	14,867	14,516	-2.4	19.0%	18.4%
Kalamazoo	7.4	6.6	-0.8	9,231	8,176	-11.4	23,267	22,364	-3.9	17.3%	16.6%
Kalkaska	11.2	10.5	-0.7	863	814	-5.7	1,792	1,771	-1.2	22.2%	21.6%
Kent	7.1	6.2	-0.9	22,057	19,149	-13.2	52,601	49,512	-5.9	17.1%	16.2%
Keweenaw	14.5	15.5	0.9	145	152	5.3	142	140	-1.4	12.4%	12.0%
Lake	13.8	13.3	-0.5	521	491	-5.8	1,719	1,687	-1.9	28.5%	27.4%
Lapeer	13.7	13.8	0.2	5,509	5,626	2.1	5,475	5,432	-0.8	14.0%	13.7%
Leelanau	10.0	8.6	-1.4	998	860	-13.8	753	761	1.1	7.2%	7.4%

¹ Population figures based on U.S. Census Bureau county estimates from July of the previous year.

² In some cases the Michigan number is slightly different from the county total.

Data sources: Unemployment: Bureau of Labor Statistics, Local Area Unemployment Statistics; Public Assistance: Michigan Department of Human Services.

 Prepared by: Michigan League for Public Policy	Unemployment (data not seasonally adjusted)						Food Assistance Program				
	Unemployment Rate			Number Unemployed			Average Number of Households Per Month			Percent of Population Receiving Assistance ¹	
	County	Qtr 1 2012	Qtr 1 2013	+/- points	Qtr 1 2012	Qtr 1 2013	% change	Qtr 1 2012	Qtr 1 2013	% change	Qtr 1 2012
Lenawee	9.9	9.0	-0.9	4,391	3,930	-10.5	7,711	7,615	-1.2	16.4%	16.0%
Livingston	9.1	8.8	-0.3	7,971	7,693	-3.5	6,609	6,043	-8.6	7.5%	6.7%
Luce	12.1	11.1	-1.0	299	271	-9.4	534	532	-0.4	16.6%	16.0%
Mackinac	23.6	23.4	-0.2	1,097	1,071	-2.4	803	780	-2.9	14.2%	13.0%
Macomb	10.7	10.2	-0.5	42,247	40,353	-4.5	62,316	62,368	0.1	15.1%	14.9%
Manistee	12.4	11.7	-0.7	1,291	1,204	-6.8	2,164	2,156	-0.4	17.4%	17.1%
Marquette	8.8	8.0	-0.8	3,027	2,774	-8.3	4,743	4,386	-7.5	12.9%	11.9%
Mason	11.3	10.3	-1.0	1,586	1,424	-10.2	2,812	2,653	-5.6	20.1%	19.0%
Mecosta	10.5	9.6	-0.9	2,123	1,906	-10.2	4,010	3,771	-6.0	18.5%	17.4%
Menominee	8.0	6.9	-1.1	959	844	-12.0	1,733	1,691	-2.4	13.8%	13.2%
Midland	8.0	7.5	-0.5	3,319	3,095	-6.8	5,683	5,777	1.6	13.7%	13.5%
Missaukee	13.6	12.5	-1.2	790	701	-11.2	1,214	1,234	1.6	18.1%	17.9%
Monroe	8.8	8.3	-0.5	6,077	5,660	-6.9	9,893	9,581	-3.2	13.6%	13.0%
Montcalm	12.3	11.3	-0.9	3,078	2,788	-9.4	5,854	5,665	-3.2	19.8%	19.3%
Montmorency	19.4	17.7	-1.7	674	596	-11.6	1,049	1,009	-3.8	21.1%	19.8%
Muskegon	9.7	8.9	-0.8	7,973	7,358	-7.7	23,123	22,559	-2.4	26.3%	25.3%
Newaygo	10.3	9.0	-1.3	2,235	1,955	-12.5	5,039	5,102	1.2	22.8%	22.6%
Oakland	9.1	8.7	-0.4	52,532	50,578	-3.7	69,455	66,335	-4.5	11.0%	10.3%
Oceana	14.6	13.6	-0.9	1,859	1,716	-7.7	2,666	2,588	-2.9	23.3%	22.1%
Ogemaw	12.3	12.1	-0.2	1,092	1,050	-3.9	2,857	2,839	-0.7	26.2%	25.5%
Ontonagon	15.3	14.5	-0.8	402	358	-10.8	605	572	-5.5	16.5%	15.8%
Osceola	11.6	10.8	-0.8	1,038	958	-7.7	2,240	2,196	-2.0	21.2%	20.0%
Oscoda	18.0	17.3	-0.8	596	544	-8.6	1,053	1,059	0.5	22.9%	23.4%
Otsego	12.8	11.7	-1.0	1,353	1,221	-9.8	2,444	2,418	-1.1	20.6%	20.1%
Ottawa	7.6	6.5	-1.1	9,847	8,479	-13.9	11,242	10,601	-5.7	9.2%	8.6%
Presque Isle	19.2	18.4	-0.9	1,055	992	-6.0	1,006	982	-2.4	14.9%	14.3%
Roscommon	13.5	13.3	-0.2	1,254	1,219	-2.7	3,085	3,020	-2.1	24.4%	23.7%
Saginaw	9.4	8.9	-0.5	8,562	7,909	-7.6	23,625	23,085	-2.3	23.3%	22.6%
St. Clair	13.5	13.3	-0.2	10,162	10,031	-1.3	14,697	14,632	-0.4	18.3%	17.9%
St. Joseph	9.6	7.8	-1.8	2,634	2,107	-20.0	5,806	5,447	-6.2	20.9%	19.3%
Sanilac	11.8	11.3	-0.5	2,263	2,121	-6.3	3,791	3,629	-4.3	19.3%	18.2%
Schoolcraft	15.8	15.6	-0.2	575	540	-6.1	726	702	-3.3	17.4%	16.6%
Shiawassee	10.6	9.9	-0.7	3,500	3,212	-8.2	5,873	5,906	0.6	18.0%	17.9%
Tuscola	11.3	10.9	-0.3	2,898	2,768	-4.5	4,518	4,539	0.5	18.2%	18.3%
Van Buren	11.5	10.3	-1.2	4,199	3,704	-11.8	7,494	7,396	-1.3	21.4%	21.0%
Washtenaw	5.8	5.2	-0.6	10,625	9,574	-9.9	20,487	19,422	-5.2	10.5%	10.0%
Wayne	11.6	11.5	-0.1	94,291	93,724	-0.6	272,315	273,806	0.5	29.4%	29.0%
Wexford	12.8	12.3	-0.6	1,704	1,588	-6.8	3,732	3,849	3.2	23.7%	24.1%

¹ Population figures based on U.S. Census Bureau county estimates from July of the previous year.

² In some cases the Michigan number is slightly different from the county total.

Data sources: Unemployment: Bureau of Labor Statistics, Local Area Unemployment Statistics; Public Assistance: Michigan Department of Human Services.

County	Family Independence Program (Cash Assistance)					Child Day Care		Medicaid				
	Average Number of Families Receiving Cash Assistance Per Month ¹			Percent of Population Receiving Assistance ²		Average Number of Children Receiving Care Per Month		Average Number of Persons Eligible for Medicaid ONLY (Excludes FIP & SSI Recipients)			Percent of Population Eligible for Medicaid (Includes FIP & SSI Recipients) ²	
	Qtr 1 2012	Qtr 1 2013	% change	Qtr 1 2012	Qtr 1 2013	Qtr 1 2012	Qtr 1 2013	Qtr 1 2012	Qtr 1 2013	% change	Qtr 1 2012	Qtr 1 2013
Michigan³	59,769	54,161	-9.4	1.5%	1.4%	49,263	44,313	1,513,753	1,511,470	-0.2	19.5%	19.4%
Alcona	31	33	8.7	0.8%	0.7%	22	21	1,425	1,553	9.0	16.5%	18.0%
Alger	21	18	-11.3	0.5%	0.4%	16	13	1,269	1,223	-3.7	15.7%	15.3%
Allegan	330	280	-15.1	0.8%	0.7%	385	353	16,604	16,731	0.8	17.1%	17.1%
Alpena	167	153	-8.6	1.4%	1.2%	154	147	4,881	4,971	1.9	22.1%	22.2%
Antrim	45	29	-35.3	0.5%	0.3%	46	81	3,831	3,888	1.5	18.8%	19.0%
Arenac	65	51	-21.0	1.0%	0.7%	80	52	2,972	2,975	0.1	23.8%	23.5%
Baraga	51	29	-43.5	1.5%	0.7%	26	31	1,308	1,329	1.6	18.6%	18.2%
Barry	138	117	-15.3	0.6%	0.4%	184	155	7,936	7,803	-1.7	15.3%	15.0%
Bay	475	465	-2.1	1.1%	1.1%	740	752	16,218	16,068	-0.9	19.1%	19.0%
Benzie	40	30	-24.2	0.6%	0.3%	28	40	2,710	2,737	1.0	17.9%	17.9%
Berrien	957	932	-2.5	1.5%	1.5%	983	906	26,965	26,889	-0.3	22.0%	21.9%
Branch	256	168	-34.5	1.6%	0.9%	217	153	8,096	8,163	0.8	22.0%	21.6%
Calhoun	1,060	817	-22.9	2.0%	1.5%	888	764	25,023	25,214	0.8	24.0%	23.8%
Cass	178	169	-5.0	0.8%	0.8%	233	202	9,011	8,686	-3.6	20.1%	19.5%
Charlevoix	32	22	-30.2	0.3%	0.2%	65	86	3,985	4,029	1.1	17.3%	17.4%
Cheboygan	76	74	-3.5	0.7%	0.7%	94	65	4,935	4,726	-4.2	22.3%	21.6%
Chippewa	184	136	-26.0	1.2%	0.8%	111	102	5,278	5,390	2.1	17.1%	17.0%
Clare	220	196	-10.9	1.8%	1.7%	126	120	6,577	6,393	-2.8	27.4%	26.7%
Clinton	96	87	-9.1	0.3%	0.2%	177	148	6,694	6,679	-0.2	9.9%	10.0%
Crawford	67	79	17.4	1.2%	1.4%	47	46	2,576	2,493	-3.2	21.9%	21.8%
Delta	100	64	-35.8	0.6%	0.4%	160	146	6,022	5,972	-0.8	19.8%	19.5%
Dickinson	34	32	-5.9	0.3%	0.2%	119	100	4,169	4,056	-2.7	18.4%	17.9%
Eaton	223	187	-16.4	0.5%	0.4%	421	422	12,886	13,118	1.8	13.6%	13.8%
Emmet	41	30	-27.4	0.3%	0.2%	114	104	4,975	4,868	-2.1	17.1%	16.7%
Genesee	5,836	5,525	-5.3	3.6%	3.5%	4,421	3,960	73,567	72,720	-1.2	24.9%	24.7%
Gladwin	125	114	-8.8	1.2%	1.1%	99	95	4,444	4,463	0.4	22.0%	22.1%
Gogebic	114	86	-24.5	1.9%	1.4%	44	32	2,658	2,688	1.1	21.2%	20.8%
Gr. Traverse	161	146	-9.7	0.4%	0.3%	298	254	12,570	12,633	0.5	16.2%	16.2%
Gratiot	101	92	-9.5	0.6%	0.5%	166	152	7,216	7,243	0.4	20.2%	20.2%
Hillsdale	275	252	-8.4	1.6%	1.5%	174	154	7,862	7,893	0.4	21.2%	21.1%
Houghton	73	47	-35.2	0.5%	0.4%	82	50	5,347	5,343	-0.1	17.0%	16.8%
Huron	90	75	-17.0	0.7%	0.6%	162	138	5,039	4,825	-4.2	18.5%	17.7%
Ingham	1,345	1,121	-16.7	1.3%	1.1%	1,386	1,388	39,843	41,677	4.6	18.1%	18.6%
Ionia	163	123	-24.6	0.6%	0.4%	244	244	9,778	9,787	0.1	17.8%	17.8%
Iosco	159	118	-25.6	1.5%	1.1%	137	113	4,982	5,013	0.6	24.4%	24.1%
Iron	73	71	-1.8	1.6%	1.6%	13	11	1,981	2,028	2.4	21.5%	21.8%
Isabella	137	137	0.0	0.5%	0.4%	262	248	8,607	8,535	-0.8	14.6%	14.5%
Jackson	1,131	1,056	-6.7	1.9%	1.8%	918	807	25,657	25,628	-0.1	20.5%	20.4%
Kalamazoo	1,638	1,420	-13.3	1.7%	1.5%	1,602	1,503	34,488	35,097	1.8	17.6%	17.7%
Kalkaska	39	39	-0.9	0.6%	0.5%	71	60	3,748	3,810	1.7	24.7%	25.2%
Kent	3,396	2,850	-16.1	1.4%	1.1%	3,687	3,028	96,587	96,093	-0.5	19.5%	19.2%
Keweenaw	5	3	-35.7	0.3%	0.2%	1	0	251	275	9.6	13.7%	14.5%
Lake	71	69	-3.7	1.5%	1.5%	51	45	2,415	2,393	-0.9	27.5%	27.2%
Lapeer	202	179	-11.4	0.6%	0.5%	327	291	12,694	12,763	0.5	16.3%	16.3%
Leelanau	13	15	15.0	0.2%	0.1%	28	36	1,849	1,883	1.8	9.4%	9.5%

¹ Includes both regular and extended FIP.

² Population figures based on U.S. Census Bureau county estimates from July of the previous year.

³ In some cases the Michigan number is slightly different from the county total.

Data sources: Unemployment: Bureau of Labor Statistics, Local Area Unemployment Statistics; Public Assistance: Michigan Department of Human Services.

County	Family Independence Program (Cash Assistance)					Child Day Care		Medicaid				
	Average Number of Families Receiving Cash Assistance Per Month ¹			Percent of Population Receiving Assistance ²		Average Number of Children Receiving Care Per Month		Average Number of Persons Eligible for Medicaid ONLY (Excludes FIP & SSI Recipients)			Percent of Population Eligible for Medicaid (Includes FIP & SSI Recipients) ²	
	Qtr 1 2012	Qtr 1 2013	% change	Qtr 1 2012	Qtr 1 2013	Qtr 1 2012	Qtr 1 2013	Qtr 1 2012	Qtr 1 2013	% change	Qtr 1 2012	Qtr 1 2013
Lenawee	458	428	-6.4	1.2%	1.2%	464	447	14,787	14,560	-1.5	18.1%	17.9%
Livingston	218	172	-21.0	0.3%	0.2%	270	258	14,417	14,229	-1.3	8.8%	8.7%
Luce	43	38	-10.2	2.0%	1.7%	12	12	1,017	1,029	1.2	20.8%	20.8%
Mackinac	41	18	-55.7	1.0%	0.4%	18	19	1,477	1,434	-2.9	16.1%	15.2%
Macomb	3,556	3,210	-9.7	1.1%	1.0%	2,860	2,508	109,479	112,358	2.6	16.0%	16.4%
Manistee	81	72	-10.7	0.8%	0.7%	56	40	3,921	3,883	-1.0	19.3%	19.0%
Marquette	205	146	-28.8	0.7%	0.5%	206	192	8,294	8,436	1.7	14.6%	14.6%
Mason	140	134	-4.8	1.1%	1.1%	249	189	5,322	5,113	-3.9	22.4%	21.5%
Mecosta	160	121	-24.2	0.9%	0.6%	156	145	7,227	7,121	-1.5	20.1%	19.8%
Menominee	46	38	-16.8	0.4%	0.3%	57	47	3,593	3,540	-1.5	17.4%	17.2%
Midland	166	153	-8.2	0.5%	0.4%	305	251	10,713	10,790	0.7	15.1%	15.2%
Missaukee	64	49	-23.6	1.1%	0.8%	57	50	2,837	2,842	0.2	21.8%	21.7%
Monroe	548	447	-18.4	0.9%	0.7%	452	425	19,311	19,049	-1.4	15.3%	15.0%
Montcalm	90	90	0.0	0.3%	0.3%	180	181	11,768	11,684	-0.7	21.7%	21.6%
Montmorency	31	25	-19.6	0.8%	0.5%	20	11	1,818	1,758	-3.3	23.4%	22.5%
Muskegon	2,348	1,906	-18.8	3.5%	2.8%	1,811	1,717	32,458	33,284	2.5	26.1%	26.0%
Newaygo	263	248	-5.7	1.3%	1.3%	217	214	9,859	9,895	0.4	24.6%	24.8%
Oakland	3,804	2,955	-22.3	0.8%	0.6%	2,864	2,582	117,578	116,419	-1.0	12.1%	11.9%
Oceana	200	159	-20.5	2.2%	1.7%	119	103	6,038	5,842	-3.2	28.0%	26.8%
Ogemaw	176	140	-20.3	2.3%	1.6%	126	105	4,294	4,415	2.8	26.0%	26.0%
Ontonagon	20	16	-20.3	0.8%	0.6%	5	4	961	975	1.4	18.2%	18.2%
Osceola	92	87	-5.1	1.0%	0.8%	84	92	4,633	4,528	-2.3	24.3%	23.8%
Oscoda	48	50	4.1	1.5%	1.6%	35	25	1,661	1,639	-1.3	24.0%	23.9%
Otsego	100	87	-13.0	1.0%	0.9%	178	163	4,799	4,852	1.1	23.2%	23.3%
Ottawa	409	308	-24.7	0.3%	0.3%	732	609	28,908	28,819	-0.3	12.1%	12.0%
Presque Isle	30	29	-3.3	0.6%	0.5%	25	23	1,854	1,865	0.6	17.5%	17.4%
Roscommon	155	126	-18.5	1.6%	1.3%	96	85	4,658	4,675	0.4	24.5%	24.4%
Saginaw	1,945	1,706	-12.3	2.5%	2.2%	2,060	1,859	33,809	33,110	-2.1	23.7%	23.1%
St. Clair	681	673	-1.2	1.1%	1.1%	693	614	26,821	26,425	-1.5	19.8%	21.4%
St. Joseph	239	196	-17.9	1.0%	0.8%	335	291	13,601	13,281	-2.4	25.4%	20.6%
Sanilac	206	139	-32.6	1.2%	0.8%	195	171	7,843	7,791	-0.7	21.9%	20.1%
Schoolcraft	44	25	-42.4	1.3%	0.7%	18	25	1,373	1,380	0.6	20.7%	19.6%
Shiawassee	458	422	-8.0	1.7%	1.6%	313	276	11,006	11,161	1.4	19.9%	24.8%
Tuscola	288	199	-31.0	1.4%	0.9%	232	231	9,619	9,906	3.0	21.2%	21.5%
Van Buren	363	292	-19.7	1.1%	0.9%	322	267	15,666	15,752	0.6	24.7%	24.6%
Washtenaw	927	769	-17.1	0.6%	0.5%	1,185	1,007	32,592	32,154	-1.3	11.4%	11.2%
Wayne	20,899	20,566	-1.6	3.0%	3.1%	12,415	11,228	371,727	368,440	-0.9	28.1%	28.1%
Wexford	177	165	-6.6	1.3%	1.3%	213	200	6,915	7,089	2.5	25.9%	26.5%

¹ Population figures based on U.S. Census Bureau county estimates from July of the previous year.

² In some cases the Michigan number is slightly different from the county total.

³ Includes both regular and extended FIP.

Data sources: Unemployment: Bureau of Labor Statistics, Local Area Unemployment Statistics; Public Assistance: Michigan Department of Human Services.

Employment Trends by Selected Industries in Michigan
(data not seasonally adjusted, rounded to the nearest hundred)

Industry	Avg 2012 Qtr 1	Avg 2013 Qtr 1	% Change	Industry	Avg 2012 Qtr 1	Avg 2013 Qtr 1	% Change
TOTAL NONFARM	3,951,433	3,993,033	1.1	•Retail Trade	437,800	443,667	1.3
Natural Resources and Mining	7,400	7,300	-1.4	Motor Vehicle and Parts Dealers	53,100	55,233	4.0
Construction	112,433	107,133	-4.7	Building Material and Garden Equip. and Supplies Dealers	38,200	38,400	0.5
Construction of Buildings	25,100	23,900	-4.8	Food and Beverage Stores	72,633	72,400	-0.3
Heavy and Civil Engineering	10,733	10,833	0.9	Health and Personal Care	30,467	30,467	0.0
Specialty Trade Contractors	76,600	72,400	-5.5	Gasoline Stations	23,000	23,300	1.3
Manufacturing	525,467	545,033	3.7	Clothing and Clothing Accessories	33,233	33,033	-0.6
•Durable Goods	396,867	412,367	3.9	Gasoline Stations	24,333	24,400	0.3
Nonmetallic Mineral Products	9,767	9,033	-7.5	Clothing and Clothing Accessories	33,233	33,033	-0.6
Primary Metal Manufacturing	20,967	21,867	4.3	Sporting Goods, Hobby, Book, and Music Stores	19,133	19,433	1.6
Fabricated Metal Products	74,667	76,367	2.3	General Merchandise Stores	111,167	109,233	-1.7
Metalworking Machinery Manuf.	34,633	36,300	4.8	Miscellaneous Store Retail	22,000	23,433	6.5
Computer and Electronic Products	18,067	18,033	-0.2	•Transportation Warehousing & Utilities	118,767	121,200	2.0
Motor Vehicle Manufacturing	38,400	42,600	10.9	Air Transportation	14,100	13,733	-2.6
Motor Vehicle Parts Manufacturing	102,200	105,700	3.4	Rail Transportation	3,100	2,967	-4.3
Furniture and Related Products	19,567	20,167	3.1	Truck Transportation	37,667	38,033	1.0
•Non-Durable Goods	128,600	132,667	3.2	Warehousing and Storage	13,967	14,533	4.1
Food Manufacturing	31,733	32,567	2.6	Information	53,233	51,367	-3.5
Printing and Related Support Activities	14,000	13,733	-1.9	Publishing Industries	16,000	15,433	-3.5
Chemical Manufacturing	27,833	28,933	4.0	Telecommunications	20,067	19,867	-1.0
Plastics and Rubber Products	33,167	35,633	7.4	Financial Activities	192,700	195,400	1.4
Trade Transportation & Utilities	712,333	723,100	1.5	Finance and Insurance	146,333	148,667	1.6
•Wholesale Trade	155,767	158,233	1.6	Real Estate	33,200	33,667	1.4
Merchant Wholesalers Durable Goods	87,100	88,800	2.0	Professional & Business Services	565,533	573,633	1.4
Merchant Wholesalers Nondurable Goods	45,033	45,967	2.1	Legal Services	27,367	27,733	1.3
Wholesale Electronic Markets and Agents and Brokers	23,633	23,467	-0.7	Accounting, Tax Preparation, Bookkeeping & Payroll Services	31,233	31,600	1.2
				Architectural Engineering	65,600	68,167	3.9

Note: Industry details and subtotals may not sum to totals due to rounding.

Source: DLEG/Office of Labor Market Information, Current Employment Statistics Section - (800) 225-3732

Employment Trends by Selected Industries in Michigan
(data not seasonally adjusted, rounded to the nearest hundred)

Industry	Avg 2012 Qtr 1	Avg 2013 Qtr 1	% Change	Industry	Avg 2012 Qtr 1	Avg 2013 Qtr 1	% Change
Computer Systems Design	41,500	42,800	3.1	Government	624,067	617,400	-1.1
Management, Scientific and Technical Consulting Services	24,533	26,533	8.2	• Federal Government	52,433	51,700	-1.4
Scientific Research and Development Services	19,633	20,567	4.8	U.S. Postal Service	21,300	20,667	-3.0
Advertising and Related	12,900	12,900	0.0	• State Government	186,533	185,600	-0.5
Management of Companies	54,433	53,500	-1.7	State Government Educational Services	119,333	119,567	0.2
Administrative & Support Services	267,367	267,333	0.0	• Local Government	385,100	380,100	-1.3
Employment Services	154,533	149,933	-3.0	Local Government Educational Services	215,167	212,500	-1.2
Educational and Health Services	628,867	636,467	1.2	Local Government Elementary and Secondary Schools	188,800	186,033	-1.5
• Educational Services (see also Government)	74,633	73,667	-1.3	Local Government Jr. Colleges	26,400	26,467	0.3
• Health Care & Social Assistance	554,233	562,800	1.5				
Ambulatory Health Care Services	188,733	191,400	1.4				
Offices of Physicians	69,467	71,367	2.7				
Outpatient Care Centers	16,767	17,333	3.4				
Home Health Care Service	36,367	36,533	0.5				
Hospitals	76,233	77,211	1.3				
Nursing and Residential Care Facilities	101,067	103,133	2.0				
Social Assistance	66,933	68,867	2.9				
Individual and Family Services	29,533	31,600	7.0				
Leisure and Hospitality	363,567	367,567	1.1				
Performing Arts Spectator Activities	7,867	6,533	-16.9				
Amusement, Gambling & Recreation	27,167	24,200	-10.9				
Accommodations	36,767	35,467	-3.5				
Food Services and Drinking	288,367	298,500	3.5				
Other Services	165,833	168,633	1.7				
Repair and Maintenance	35,600	37,600	5.6				
Personal and Laundry Services	36,167	36,500	0.9				
Religious Grantmaking Civic Professional	94,067	94,533	0.5				

VISIT OUR WEBSITE FOR MORE INFORMATION!

For an electronic copy of the Economic Security Bulletin, go to www.mlpp.org and click the "Reports" tab at the top, then "Economic Security Bulletin".

Note: Industry details and subtotals may not sum to totals due to rounding.

Source: DLEG/Office of Labor Market Information, Current Employment Statistics Section - (800) 225-3732



Michigan League for Public Policy

1223 Turner Street, Suite G-1

Lansing, MI 48906

(517) 487-5436 — Fax (517) 371-4546

Web site: www.mlpp.org

A United Way Agency

Michigan Counties With Largest Changes First Quarter 2012 — First Quarter 2013

Percentage Point Change in Unemployment Rate		Percent Change in Food Assistance Households		Percent Change in FIP Cash Assistance Families	
St. Joseph	-1.8	Livingston	-8.6	Mackinac	-55.7
Benzie	-1.8	Marquette	-7.5	Baraga	-43.5
Montmorency	-1.7	Houghton	-7.0	Schoolcraft	-42.4
Alger	-1.6	Isabella	-6.9	Delta	-35.8
Ionia	-1.5	Branch	-6.3	Keweenaw	-35.7
Leelanau	-1.4	St. Joseph	-6.2	Antrim	-35.3
Newaygo	-1.3	Mecosta	-6.0	Houghton	-35.2
Allegan	-1.2	Kent	-5.9	Branch	-34.5
Van Buren	-1.2	Emmet	-5.9	Sanilac	-32.6
Gogebic	-1.2	Ottawa	-5.7	Tuscola	-31.0

Note: Counties in bold have population of 100,000 or more.

Sources: Unemployment: Bureau of Labor Statistics, Local Area Unemployment Statistics; Public Assistance: Michigan Department of Human Services