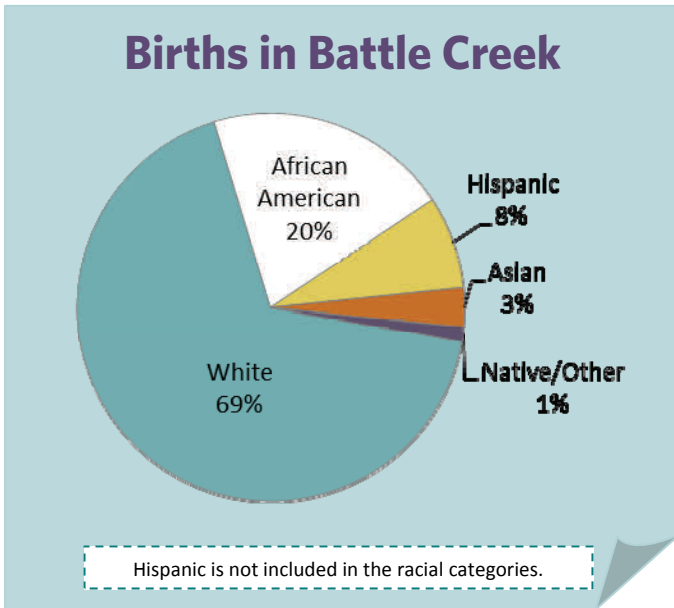




The Right Start in Michigan's Legacy Cities: Inequity Begins at Birth

Battle Creek/Calhoun



Total number of city births:

858

Percent of county total:

52%



Births to low-income mothers paid by Medicaid:* **573**

Percent of city total: **67%**

*Pregnant women are eligible for Medicaid coverage with income up to 185% poverty level.

Source: Michigan Department of Community Health, Vital Records and Health Data Development Section

MICHIGAN LEAGUE FOR PUBLIC POLICY

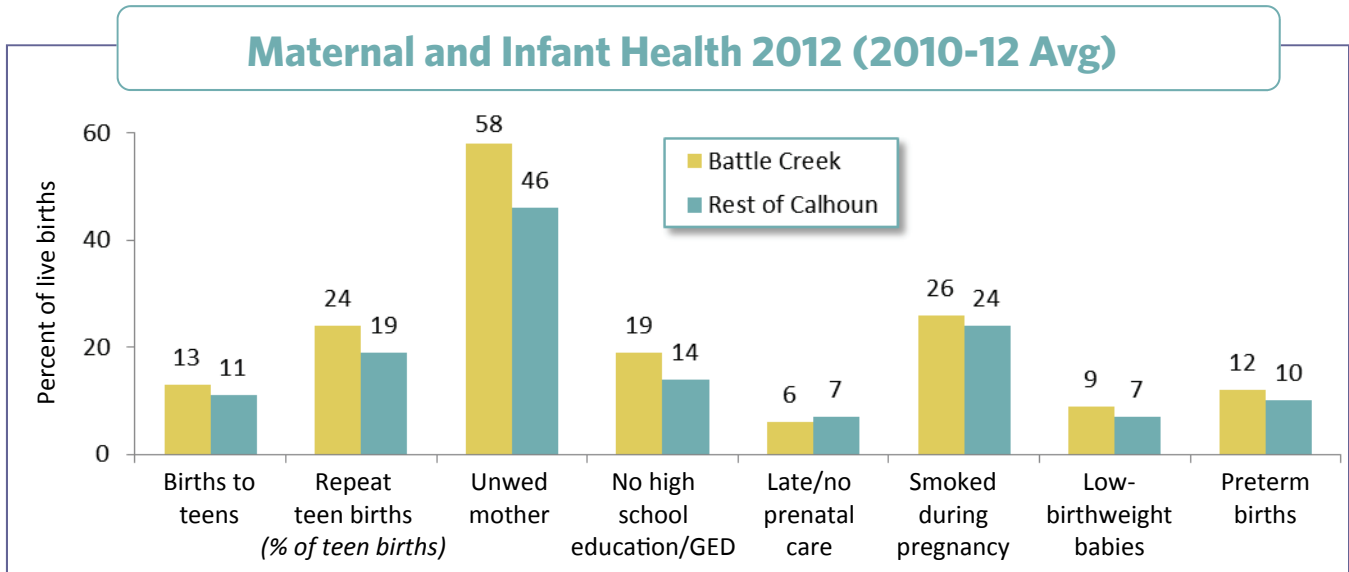
1223 TURNER STREET • SUITE G1 • LANSING, MICHIGAN 48906

P: 517.487.5436 • F: 517.371.4546 • WWW.MLPP.ORG

A UNITED WAY AGENCY

BATTLE CREEK/Rest of Calhoun County

Maternal and Infant Health 2012 (2010-12 Avg)



Maternal and Infant Well-Being 2006 vs. 2012

Indicators (% of live births)	2006 (2004-06 Avg)		2012 (2010-12 Avg)		Percent Change
	Number	Percent	Number	Percent	
Births to women under age 20	179	15%	114	13%	-13%
Rest of county	78	12	84	11	-8
Births to teens already mothers (% of teen births)	38	22	28	24	12
Rest of county	16	21	16	19	-8
Births to mothers who...					
• are unmarried	611	52	493	58	10
Rest of county	266	39	361	46	16
• no high school diploma/GED*	—	—	161	19	—
Rest of county	—	—	111	14	—
• received late/no prenatal care*	—	—	53	6	—
Rest of county	—	—	53	7	—
• smoked during pregnancy*	—	—	226	26	—
Rest of county	—	—	189	24	—
Low-birthweight babies (less than 5.5 lbs.)	94	8	73	9	5
Rest of county	57	8	54	7	-19
Preterm births (less than 37 weeks gestation)	102	9	101	12	34
Rest of county	63	9	81	10	9

*Due to changes in birth certificate this indicator cannot be compared prior to 2008.

Note: Percentage change is based on the rate not the number.

Source: Michigan Department of Community Health, Vital Records and Health Data Development Section

A negative change shows a decline or improvement.