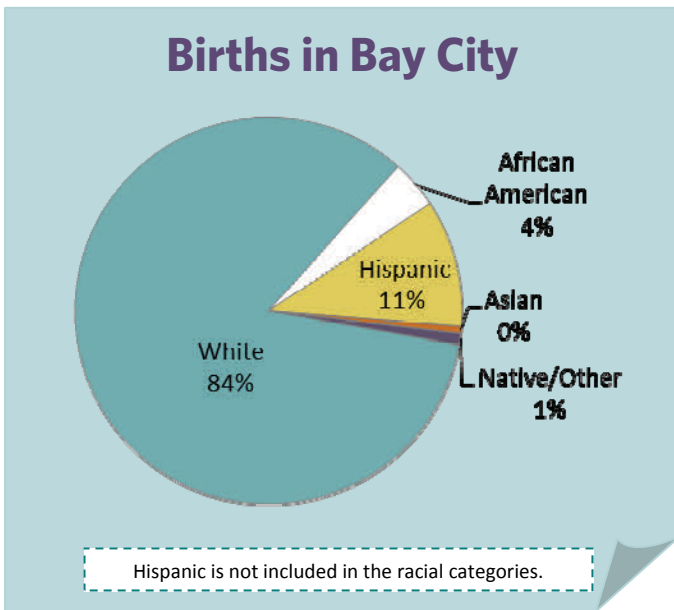




The Right Start in Michigan's Legacy Cities: Inequity Begins at Birth

Bay City/Bay



Total number of city births:

476

Percent of county total:

43%



Births to low-income mothers paid by Medicaid:* **307**

Percent of city total: **64%**

*Pregnant women are eligible for Medicaid coverage with income up to 185% poverty level.

Source: Michigan Department of Community Health, Vital Records and Health Data Development Section

MICHIGAN LEAGUE FOR PUBLIC POLICY

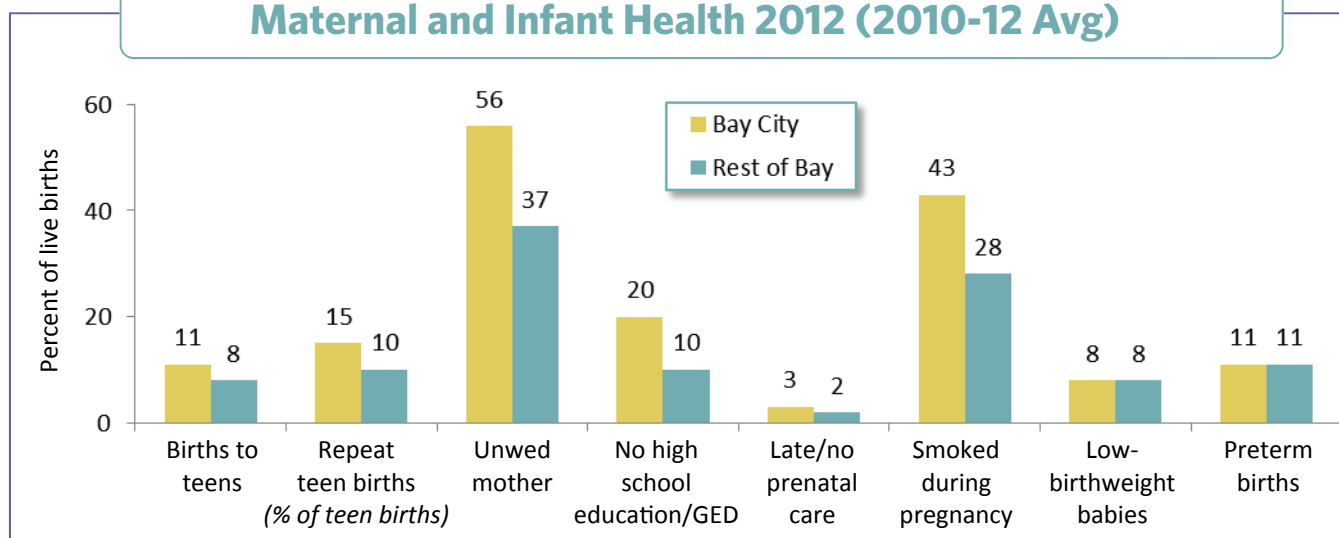
1223 TURNER STREET • SUITE G1 • LANSING, MICHIGAN 48906

P: 517.487.5436 • F: 517.371.4546 • WWW.MLPP.ORG

A UNITED WAY AGENCY

BAY CITY/Rest of Bay County

Maternal and Infant Health 2012 (2010-12 Avg)



Maternal and Infant Well-Being 2006 vs. 2012

Indicators (% of live births)	2006 (2004-06 Avg)		2012 (2010-12 Avg)		Percent Change
	Number	Percent	Number	Percent	
Births to women under age 20	79	14%	52	11%	-22%
Rest of county	46	7	49	8	14
Births to teens already mothers (% of teen births)	19	24	8	15	-37
Rest of county	6	14	5	10	-26
Births to mothers who...					
• are unmarried	284	51	265	56	10
Rest of county	209	30	236	37	21
• no high school diploma/GED*	—	—	94	20	—
Rest of county	—	—	62	10	—
• received late/no prenatal care*	—	—	12	3	—
Rest of county	—	—	15	2	—
• smoked during pregnancy*	—	—	206	43	—
Rest of county	—	—	179	28	—
Low-birthweight babies (less than 5.5 lbs.)	42	7	39	8	11
Rest of county	41	6	51	8	34
Preterm births (less than 37 weeks gestation)	53	9	53	11	18
Rest of county	58	8	69	11	29

*Due to changes in birth certificate this indicator cannot be compared prior to 2008.

Note: Percentage change is based on the rate not the number.

Source: Michigan Department of Community Health, Vital Records and Health Data Development Section

A negative change shows a decline or improvement.