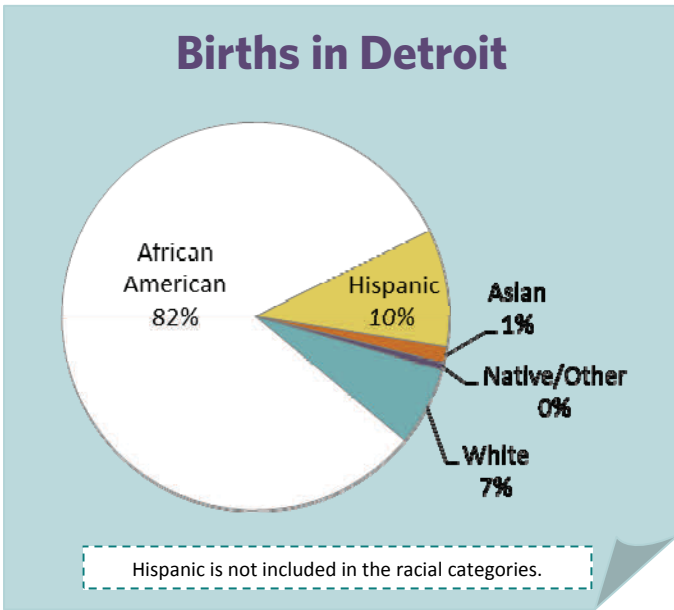




The Right Start in Michigan's Legacy Cities: Inequity Begins at Birth

Detroit/Wayne



Total number of city births:

10,463

Percent of county total:

44%



Births to low-income mothers paid by Medicaid:* **5,131**

Percent of city total: **49%**

*Pregnant women are eligible for Medicaid coverage with income up to 185% poverty level.

Source: Michigan Department of Community Health, Vital Records and Health Data Development Section

MICHIGAN LEAGUE FOR PUBLIC POLICY

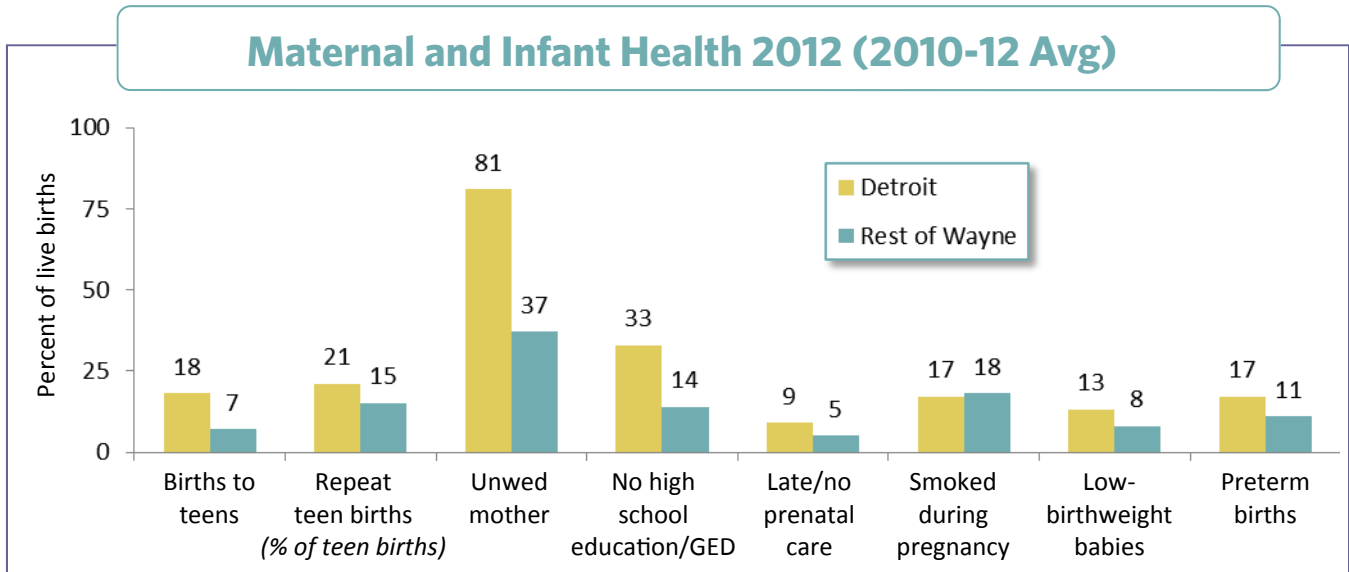
1223 TURNER STREET • SUITE G1 • LANSING, MICHIGAN 48906

P: 517.487.5436 • F: 517.371.4546 • WWW.MLPP.ORG

A UNITED WAY AGENCY

DETROIT/Rest of Wayne County

Maternal and Infant Health 2012 (2010-12 Avg)



Maternal and Infant Well-Being 2006 vs. 2012

Indicators (% of live births)	2006 (2004-06 Avg)		2012 (2010-12 Avg)		Percent Change
	Number	Percent	Number	Percent	
Births to women under age 20	2,494	19%	1,875	18%	-5%
Rest of county	1,018	7	925	7	-1
Births to teens already mothers (% of teen births)	545	23	387	21	-7
Rest of county	167	17	136	15	-11
Births to mothers who...					
• are unmarried	9,703	73	8,461	81	11
Rest of county	4,077	28	4,888	37	31
• no high school diploma/GED*	—	—	3,408	33	—
Rest of county	—	—	1,905	14	—
• received late/no prenatal care*	—	—	890	9	—
Rest of county	—	—	699	5	—
• smoked during pregnancy*	—	—	1,769	17	—
Rest of county	—	—	2,361	18	—
Low-birthweight babies (less than 5.5 lbs.)	1,848	14	1,405	13	-4
Rest of county	1,135	8	1,108	8	6
Preterm births (less than 37 weeks gestation)	2,053	15	1,777	17	10
Rest of county	1,351	9	1,516	11	22

*Due to changes in birth certificate this indicator cannot be compared prior to 2008.

Note: Percentage change is based on the rate not the number.

Source: Michigan Department of Community Health, Vital Records and Health Data Development Section

A negative change shows a decline or improvement.