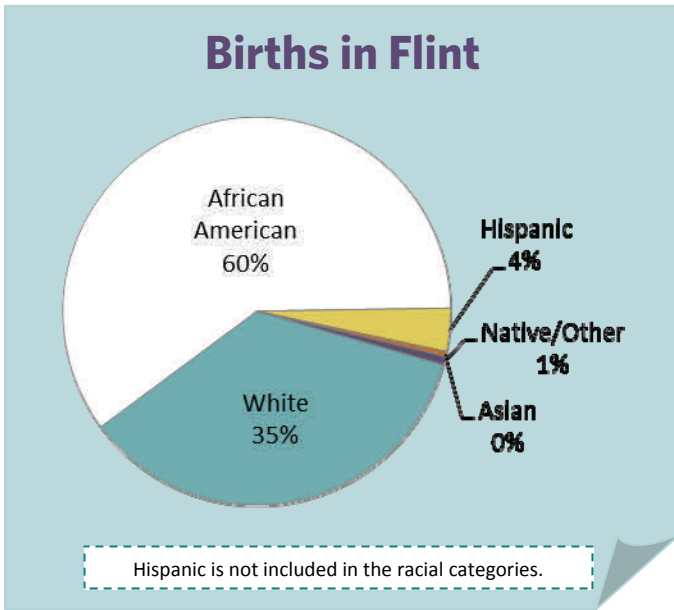




The Right Start in Michigan's Legacy Cities: Inequity Begins at Birth

Flint/Genesee



Total number of city births:

1,744

Percent of county total:

35%



Births to low-income mothers paid by Medicaid:* 1,431

Percent of city total: 82%

*Pregnant women are eligible for Medicaid coverage with income up to 185% poverty level.

Source: Michigan Department of Community Health, Vital Records and Health Data Development Section

MICHIGAN LEAGUE FOR PUBLIC POLICY

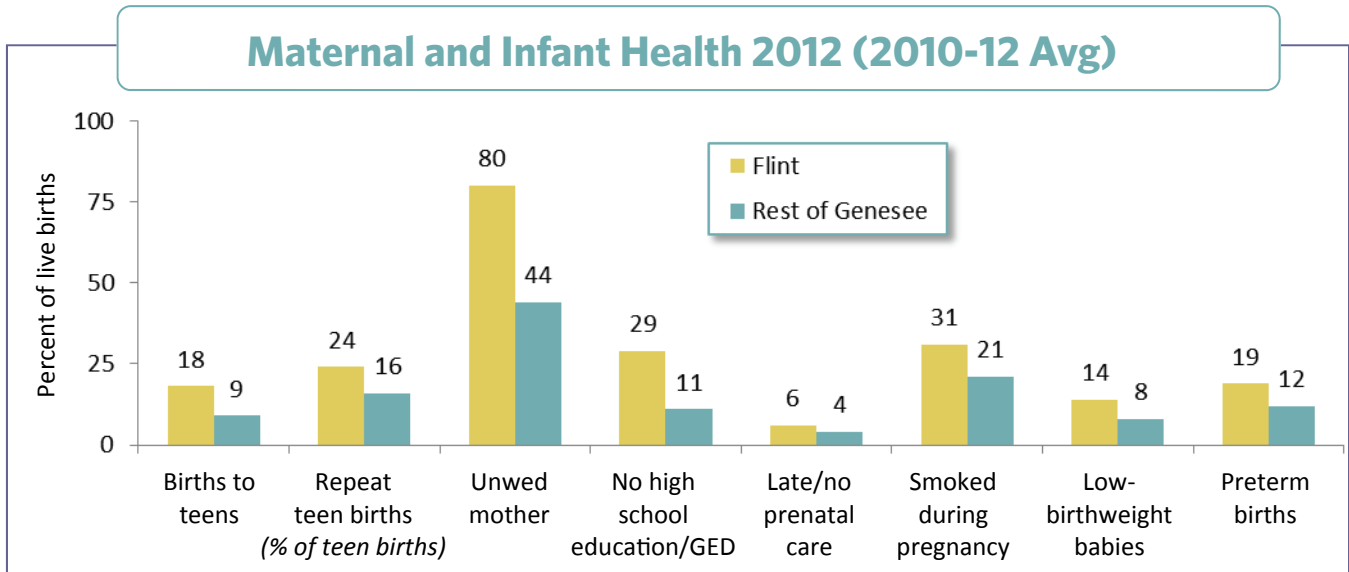
1223 TURNER STREET • SUITE G1 • LANSING, MICHIGAN 48906

P: 517.487.5436 • F: 517.371.4546 • WWW.MLPP.ORG

A UNITED WAY AGENCY

FLINT/Rest of Genesee County

Maternal and Infant Health 2012 (2010-12 Avg)



Maternal and Infant Well-Being 2006 vs. 2012

Indicators (% of live births)	2006 (2004-06 Avg)		2012 (2010-12 Avg)		Percent Change
	Number	Percent	Number	Percent	
Births to women under age 20	455	19%	310	18%	-7%
Rest of county	278	8	309	9	24
Births to teens already mothers (% of teen births)	112	25	73	24	-6
Rest of county	44	16	48	16	-1
Births to mothers who...					
• are unmarried	1,718	72	1,401	80	12
Rest of county	1,167	32	1,455	44	39
• no high school diploma/GED*	—	—	514	29	—
Rest of county	—	—	354	11	—
• received late/no prenatal care*	—	—	107	6	—
Rest of county	—	—	124	4	—
• smoked during pregnancy*	—	—	534	31	—
Rest of county	—	—	680	21	—
Low-birthweight babies (less than 5.5 lbs.)	322	13	242	14	3
Rest of county	292	8	281	8	8
Preterm births (less than 37 weeks gestation)	236	10	322	19	87
Rest of county	320	9	405	12	41

*Due to changes in birth certificate this indicator cannot be compared prior to 2008.

Note: Percentage change is based on the rate not the number.

Source: Michigan Department of Community Health, Vital Records and Health Data Development Section

A negative change shows a decline or improvement.