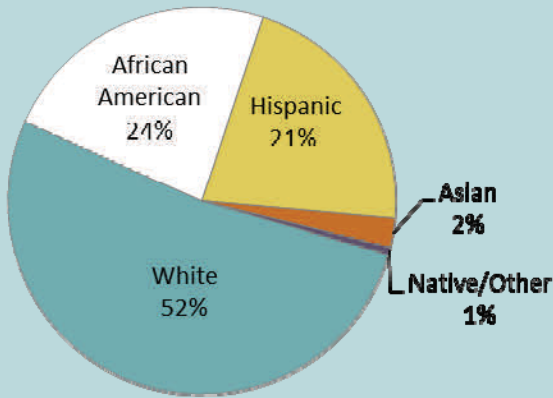




The Right Start in Michigan's Legacy Cities: Inequity Begins at Birth

Grand Rapids/Kent

Births in Grand Rapids



Hispanic is not included in the racial categories.

Total number of city births:

3,385

Percent of county total:

39%



Births to low-income mothers paid by Medicaid:* 1,822

Percent of city total: 54%

*Pregnant women are eligible for Medicaid coverage with income up to 185% poverty level.

Source: Michigan Department of Community Health, Vital Records and Health Data Development Section

MICHIGAN LEAGUE FOR PUBLIC POLICY

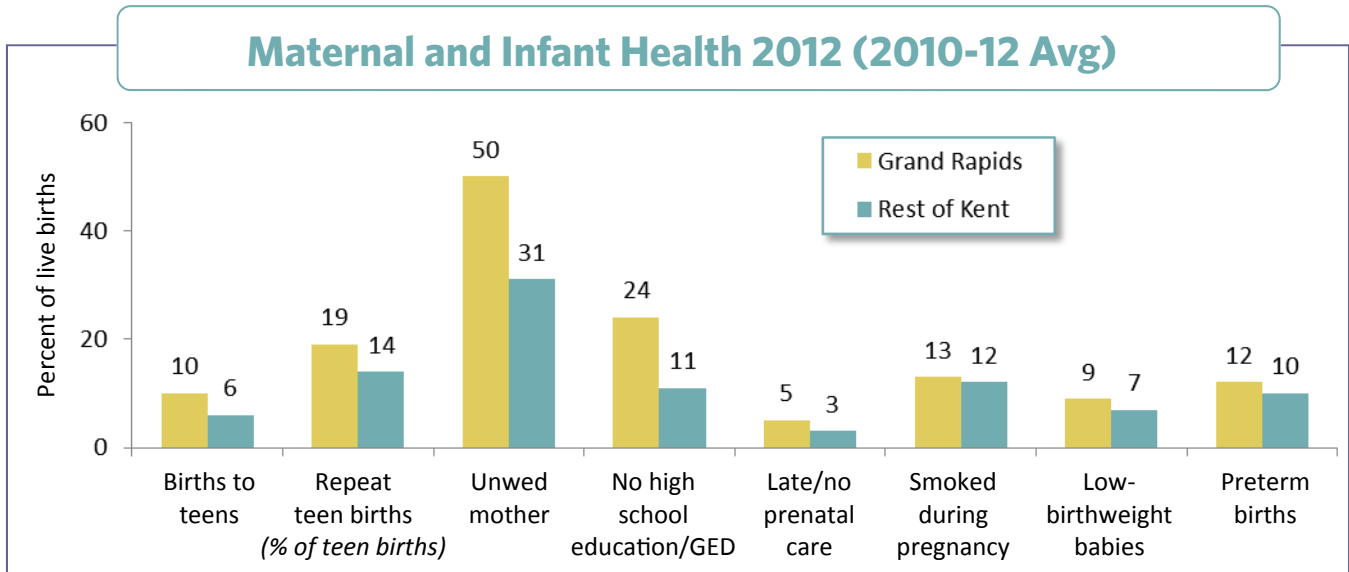
1223 TURNER STREET • SUITE G1 • LANSING, MICHIGAN 48906

P: 517.487.5436 • F: 517.371.4546 • WWW.MLPP.ORG

A UNITED WAY AGENCY

GRAND RAPIDS/Rest of Kent County

Maternal and Infant Health 2012 (2010-12 Avg)



Maternal and Infant Well-Being 2006 vs. 2012

Indicators (% of live births)	2006 (2004-06 Avg)		2012 (2010-12 Avg)		Percent Change
	Number	Percent	Number	Percent	
Births to women under age 20	461	12%	349	10%	-16%
Rest of county	431	8	327	6	-21
Births to teens already mothers (% of teen births)	106	23	67	19	-17
Rest of county	74	17	45	14	-20
Births to mothers who...					
• are unmarried	1,820	48	1,679	50	3
Rest of county	1,583	28	1,686	31	11
• no high school diploma/GED*	—	—	796	24	—
Rest of county	—	—	570	11	—
• received late/no prenatal care*	—	—	157	5	—
Rest of county	—	—	169	3	—
• smoked during pregnancy*	—	—	451	13	—
Rest of county	—	—	623	12	—
Low-birthweight babies (less than 5.5 lbs.)	314	8	306	9	9
Rest of county	408	7	378	7	-3
Preterm births (less than 37 weeks gestation)	379	10	389	12	14
Rest of county	536	10	563	10	9

*Due to changes in birth certificate this indicator cannot be compared prior to 2008.

Note: Percentage change is based on the rate not the number.

Source: Michigan Department of Community Health, Vital Records and Health Data Development Section

A negative change shows a decline or improvement.