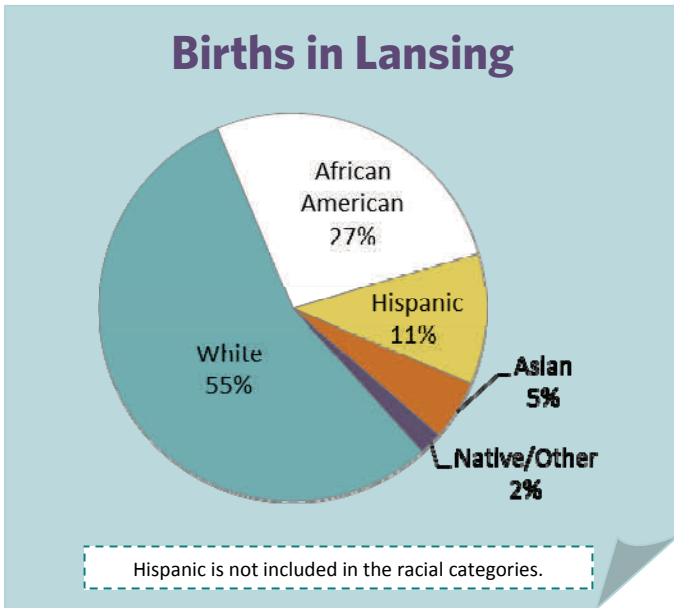




The Right Start in Michigan's Legacy Cities: Inequity Begins at Birth

Lansing/Ingham



Total number of city births:

1,918

Percent of county total:

58%



Births to low-income mothers paid by Medicaid:* **1,152**

Percent of city total: **60%**

*Pregnant women are eligible for Medicaid coverage with income up to 185% poverty level.

Source: Michigan Department of Community Health, Vital Records and Health Data Development Section

MICHIGAN LEAGUE FOR PUBLIC POLICY

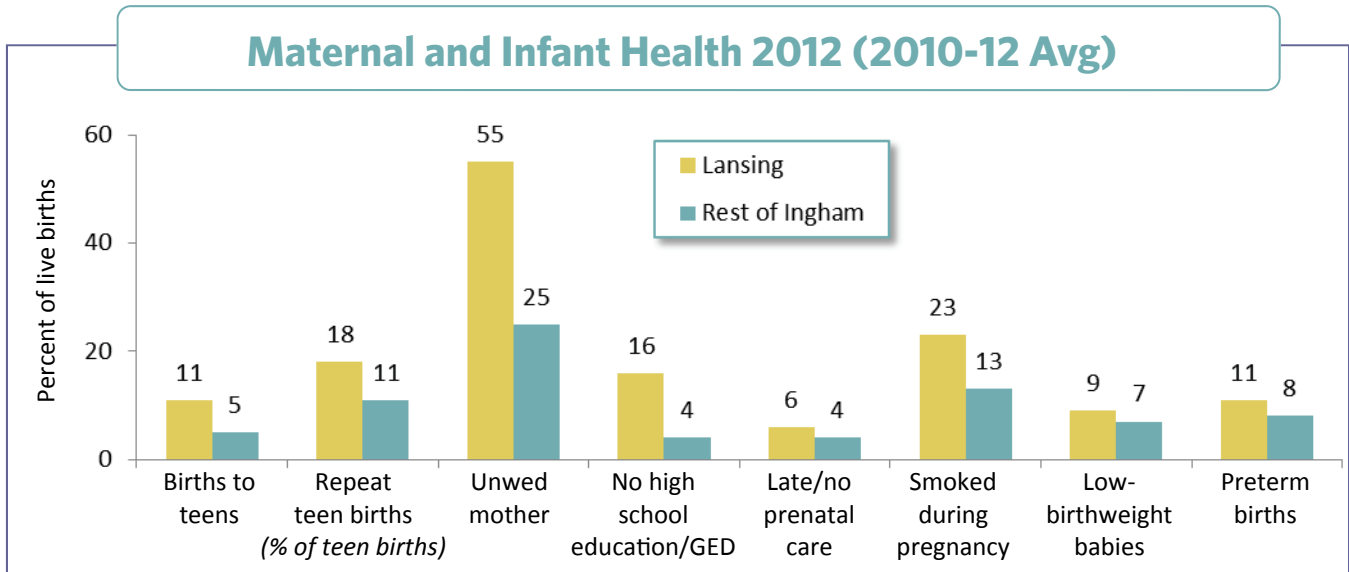
1223 TURNER STREET • SUITE G1 • LANSING, MICHIGAN 48906

P: 517.487.5436 • F: 517.371.4546 • WWW.MLPP.ORG

A UNITED WAY AGENCY

LANSING/Rest of Ingham County

Maternal and Infant Health 2012 (2010-12 Avg)



Maternal and Infant Well-Being 2006 vs. 2012

Indicators (% of live births)	2006 (2004-06 Avg)		2012 (2010-12 Avg)		Percent Change
	Number	Percent	Number	Percent	
Births to women under age 20	311	14%	211	11%	-22%
Rest of county	63	4	67	5	8
Births to teens already mothers (% of teen births)	77	25	38	18	-27
Rest of county	6	10	7	11	9
Births to mothers who...					
• are unmarried	1,125	51	1,061	55	9
Rest of county	303	21	340	25	15
• no high school diploma/GED*	—	—	300	16	—
Rest of county	—	—	58	4	—
• received late/no prenatal care*	—	—	123	6	—
Rest of county	—	—	60	4	—
• smoked during pregnancy*	—	—	439	23	—
Rest of county	—	—	184	13	—
Low-birthweight babies (less than 5.5 lbs.)	201	9	179	9	3
Rest of county	106	7	96	7	-7
Preterm births (less than 37 weeks gestation)	299	13	208	11	-20
Rest of county	166	12	115	8	-29

*Due to changes in birth certificate this indicator cannot be compared prior to 2008.

Note: Percentage change is based on the rate not the number.

Source: Michigan Department of Community Health, Vital Records and Health Data Development Section

A negative change shows a decline or improvement.