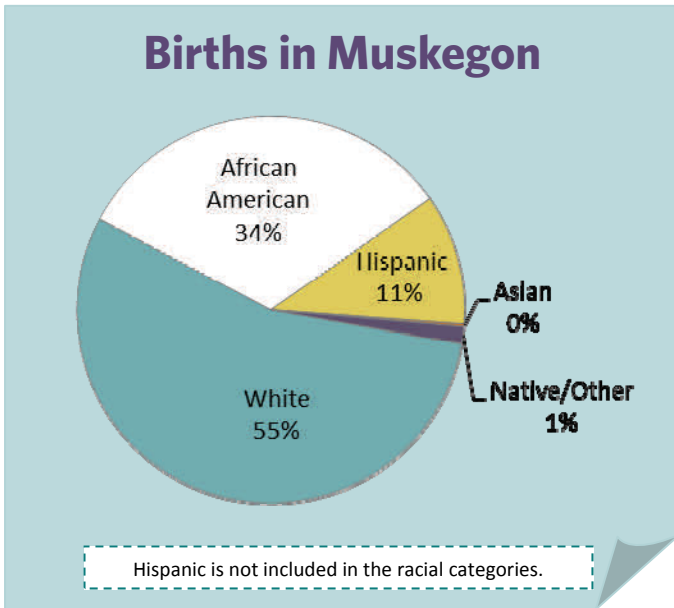




# The Right Start in Michigan's Legacy Cities: Inequity Begins at Birth

## Muskegon/Muskegon



Total number of city births:

668

Percent of county total:

31%



Births to low-income mothers paid by Medicaid:\* 522

Percent of city total: 78%

\*Pregnant women are eligible for Medicaid coverage with income up to 185% poverty level.

Source: Michigan Department of Community Health, Vital Records and Health Data Development Section

MICHIGAN LEAGUE FOR PUBLIC POLICY

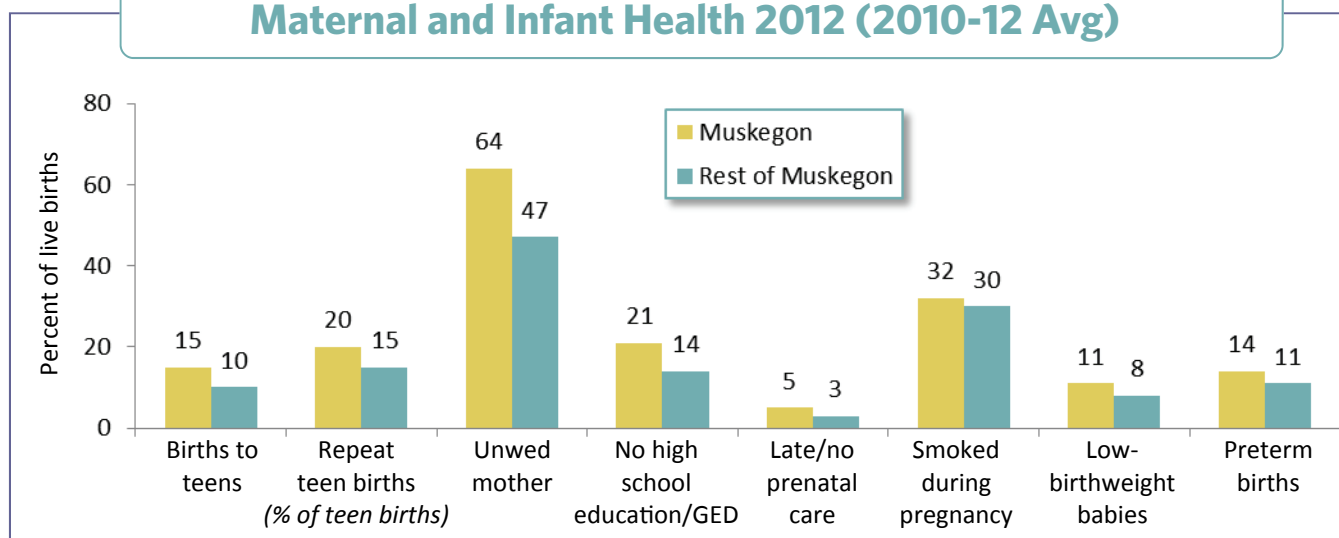
1223 TURNER STREET • SUITE G1 • LANSING, MICHIGAN 48906

P: 517.487.5436 • F: 517.371.4546 • WWW.MLPP.ORG

A UNITED WAY AGENCY

## MUSKEGON/Rest of Muskegon County

### Maternal and Infant Health 2012 (2010-12 Avg)



### Maternal and Infant Well-Being 2006 vs. 2012

Indicators (% of live births)	2006 (2004-06 Avg)		2012 (2010-12 Avg)		Percent Change
	Number	Percent	Number	Percent	
Births to women under age 20	159	16%	99	15%	-9%
Rest of county	152	11	148	10	-9
Births to teens already mothers (% of teen births)	35	22	20	20	-10
Rest of county	24	16	22	15	-5
Births to mothers who...					
• are unmarried	570	58	428	64	10
Rest of county	552	40	697	47	18
• no high school diploma/GED*	—	—	140	21	—
Rest of county	—	—	209	14	—
• received late/no prenatal care*	—	—	35	5	—
Rest of county	—	—	49	3	—
• smoked during pregnancy*	—	—	211	32	—
Rest of county	—	—	440	30	—
Low-birthweight babies (less than 5.5 lbs.)	94	10	70	11	9
Rest of county	104	8	120	8	8
Preterm births (less than 37 weeks gestation)	97	10	94	14	41
Rest of county	117	9	162	11	30

\*Due to changes in birth certificate this indicator cannot be compared prior to 2008.

Note: Percentage change is based on the rate not the number.

Source: Michigan Department of Community Health, Vital Records and Health Data Development Section

A negative change shows a decline or improvement.