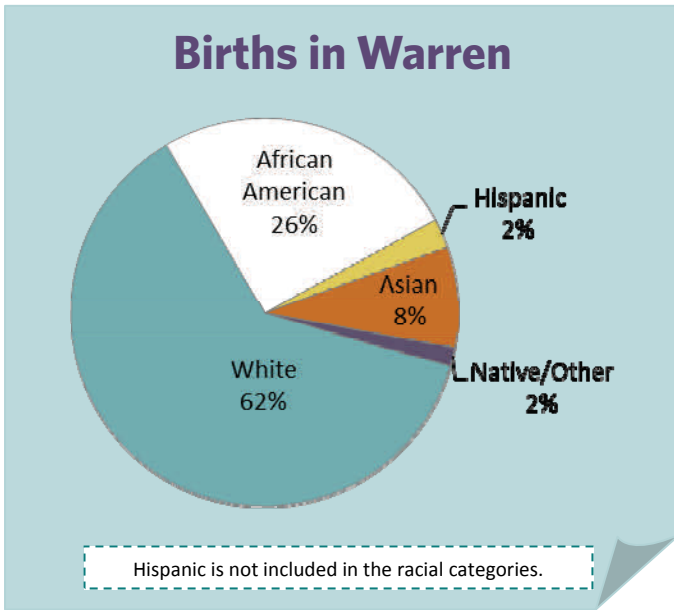




The Right Start in Michigan's Legacy Cities: Inequity Begins at Birth

Warren/Macomb



Total number of city births:

1,623

Percent of county total:

18%



Births to low-income mothers paid by Medicaid:* 774

Percent of city total: 48%

*Pregnant women are eligible for Medicaid coverage with income up to 185% poverty level.

Source: Michigan Department of Community Health, Vital Records and Health Data Development Section

MICHIGAN LEAGUE FOR PUBLIC POLICY

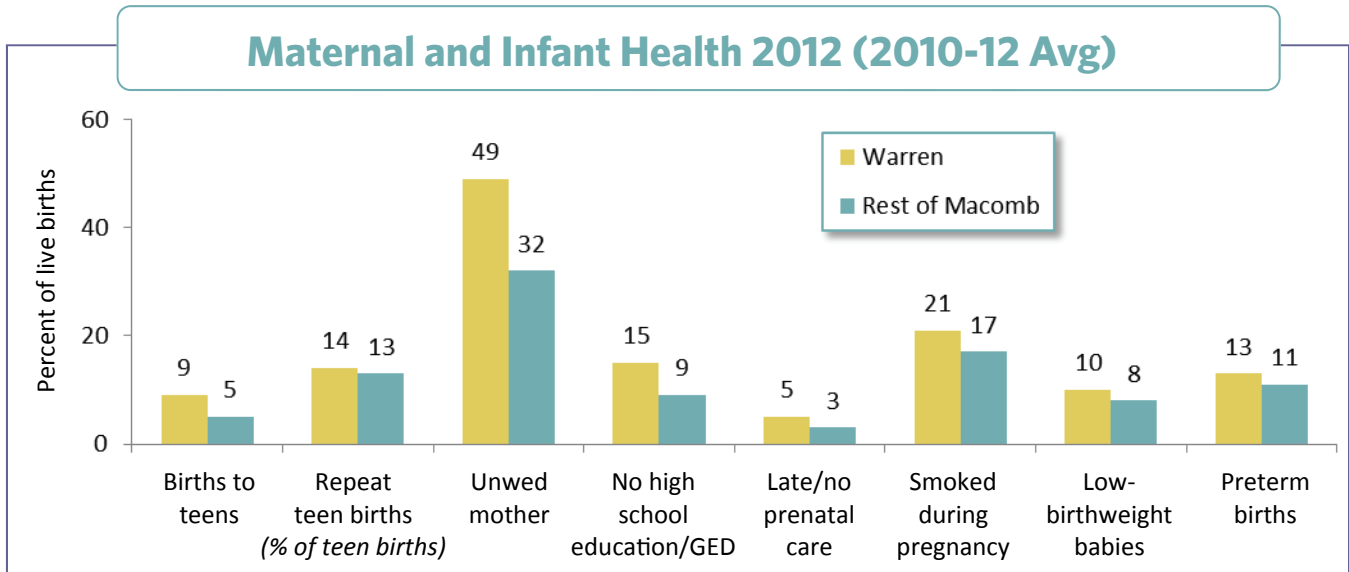
1223 TURNER STREET • SUITE G1 • LANSING, MICHIGAN 48906

P: 517.487.5436 • F: 517.371.4546 • WWW.MLPP.ORG

A UNITED WAY AGENCY

WARREN/Rest of Macomb County

Maternal and Infant Health 2012 (2010-12 Avg)



Maternal and Infant Well-Being 2006 vs. 2012

Indicators (% of live births)	2006 (2004-06 Avg)		2012 (2010-12 Avg)		Percent Change
	Number	Percent	Number	Percent	
Births to women under age 20	117	7%	137	9%	23%
Rest of county	382	5	361	5	6
Births to teens already mothers (% of teen births)	19	17	19	14	-15
Rest of county	45	12	46	13	9
Births to mothers who...					
• are unmarried	591	35	798	49	41
Rest of county	1,879	22	2,407	32	43
• no high school diploma/GED*	—	—	248	15	—
Rest of county	—	—	665	9	—
• received late/no prenatal care*	—	—	78	5	—
Rest of county	—	—	204	3	—
• smoked during pregnancy*	—	—	333	21	—
Rest of county	—	—	1,252	17	—
Low-birthweight babies (less than 5.5 lbs.)	144	8	158	10	15
Rest of county	651	8	618	8	6
Preterm births (less than 37 weeks gestation)	169	10	216	13	34
Rest of county	794	10	816	11	15

*Due to changes in birth certificate this indicator cannot be compared prior to 2008.

Note: Percentage change is based on the rate not the number.

Source: Michigan Department of Community Health, Vital Records and Health Data Development Section

A negative change shows a decline or improvement.